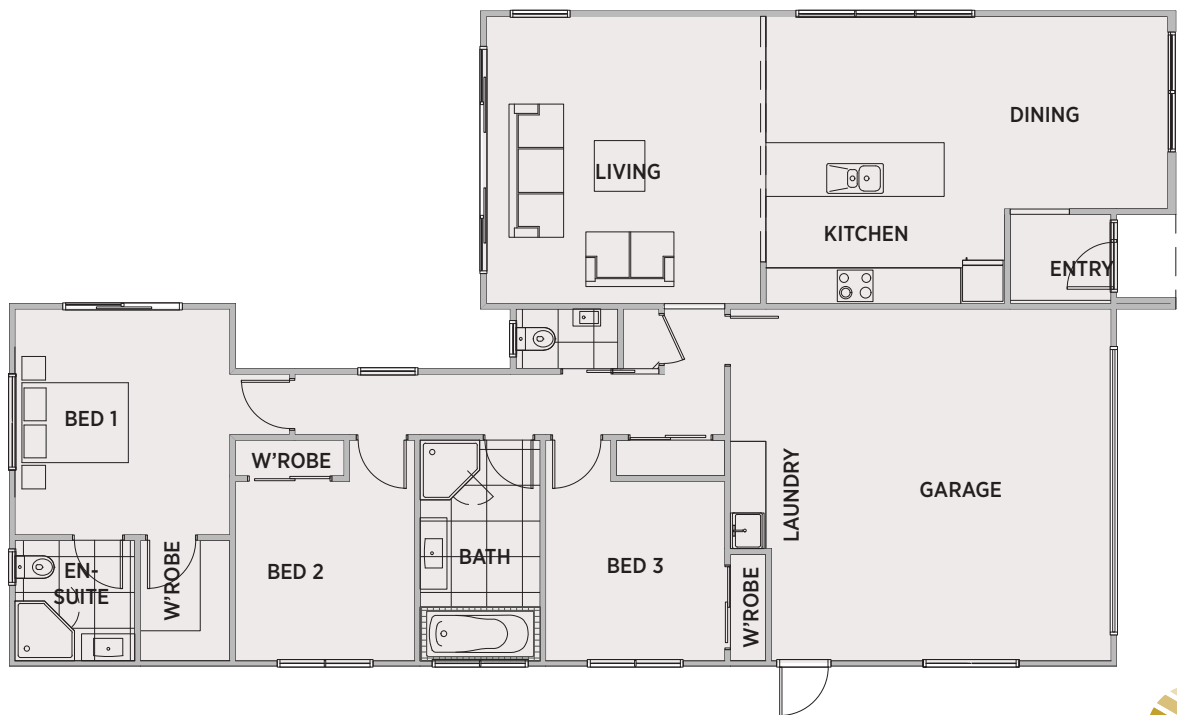




164m²
FLOOR AREA

LOT 54

| | | |
|---|---|---|
| 3 | 2 | 2 |
|---|---|---|



**KOKOMEA
PARK**

GENERAL

| | |
|---------------------------|-------------------------------------------------------------------------------|
| Build | Complete Land & Home Package |
| Consents Insurance | Building Consents and Inspection Fees Construction and Liability Insurance |
| Project Assistance | Assigned Project Manager Colour Consultant |

INTERIOR

| | |
|--------------------|---------------------------------------------------------------------------------------------------------|
| Kitchen | PC Sum to Kitchen or Standard PHL Layout |
| Sink Mixer | Robertson Agencies Ion or Uno Range |
| Appliances | PHL Westinghouse Range Parex E20 Waste Disposal |
| Splashback | Tiled Splashback Allowance |
| Laundry Tub | Aquatica |
| Flooring | Liberty Range of carpets Quickstep Classic Range of Laminate Tiled Floors to Bathrooms |
| Doors | MDF Paint Quality – Hollow Core Spray Lacquered Prehung Doors Windsor Astron Range Door Furniture |
| Wardrobes | Single Shelf and Wardrobe Rail Linen Cupboard - 4 Shelves |
| Hot Water | Rinnai 26l ext Gas Infinity |
| Heating | Daiken Heat Pump FTXS17F Inverter |
| Lights | PHL LED Light Range with PDL Iconic Switch Gear |
| TV | Reticulate for Sky TV / Home Networks |
| Clean | Commercial Clean |

EXTERIOR

| | |
|--------------------------|---------------------------------------------------------------------|
| Roof | Longrun Coloursteel |
| Fascia | Coloursteel |
| Cladding | Resene Graphex Plaster System and Cedar Weatherboard |
| Aluminium Joinery | Double-Glazed Windows and Doors with Tinted Glass |
| Front Door | Aluminium Entrance Door |
| Garage Door | Insulated Coloursteel Sectional with Auto Opener and Two Remotes |

BATHROOMS & TOILET ROOM FIXTURES

| | |
|---------------------|------------------------------------------------------------------------------------------------|
| Vanity | Robertson Agencies – Evolve Wall Hung |
| Bath | Robertson Agencies BTW Otto, FS 1700mm |
| Tapware | Robertson Agencies Ion or Uno range |
| Shower | Athena Soul – 1000 x 1000 – Angle Corner – with Moulded Recess and White Easy Clean Trap |
| Toilet Suite | Robertson Agencies –Uno BTW Vitreous China |
| Basin | Robertson Agencies – Studio Plus 440 Hand Basin with Chrome Bottle Trap (W/C only) |
| Mirrors | Above Vanity in Bathroom and Ensuite |
| Towel Rails | Heated – 7 Bar Ladder Rail |
| Fan | Manrose Halogen Fan Light |

LANDSCAPING

| | |
|--------------------|----------------------------------------------------------------|
| Landscaping | PHL Hardscape and Planting Plan |
| Fencing | PHL Colour Steel Trellis or Blade |
| Pavers | 65m2 of Firth Holland Pavers 30m2 of Firth Flagstone Pavers |
| Letterbox | PHL A4 Cedar Letterbox |
| Clothesline | Sunbeam Folding Frame Line |